



House - Terraced (EPC Rating:)

89 BOOTHLEY ROAD, BLACKPOOL,
LANCASHIRE, FY1 3RR

PCM

£750 PCM

3 Bedroom House - Terraced located in Lancashire

Welcome to Boothley Road....

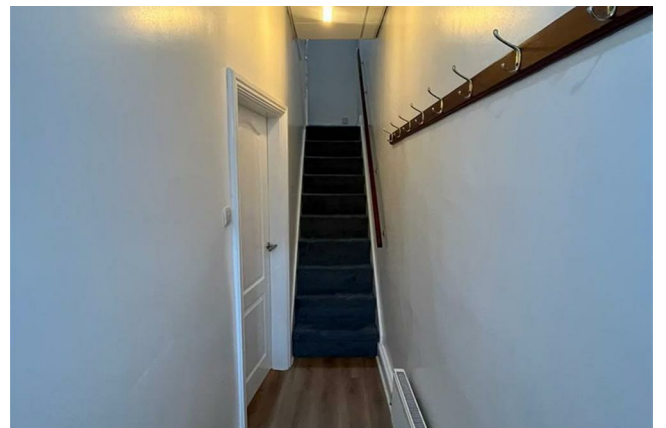
Conveniently nestled between Devonshire Road and Talbot Road meaning you easy access to the town centre and the many public transport links.

Number 89 is a spacious mid terrace property and extremely well maintained throughout, a credit to the current owner. Storage issues will become a thing of the past as this lovely family home has an abundance of it. Modern décor can be found throughout and this is complimented nicely by the newly fitted carpets and hard flooring.

Briefly comprising of:

A small, yet private paved front garden; an entrance hall; a very spacious, modern dining kitchen with an unbelievable amount of storage! There is an integrated freezer and freestanding fridge in addition to plumbing for a dishwasher. Next, away from the kitchen, is a utility area which is plumbed for your own washing machine, again with a great amount of storage for all your laundry needs. Completing the ground floor is the beautiful family bathroom benefitting from a 4 piece suite including a shower cubicle.

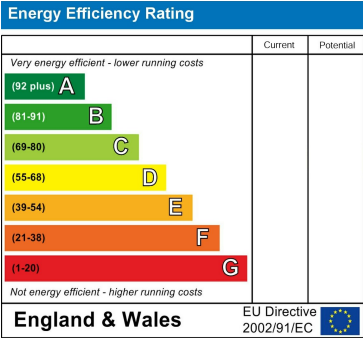
To the rear of the property is a paved rear garden with a metal shed for stowing away those garden items.



Council Tax Band

A

Energy Performance Graph



Call us on

01253 886444

hello@lsblackpool.com

Agents Note: Whilst every care has been taken to prepare these particulars, they are for guidance purposes only. All measurements are approximate and are for general guidance purposes only and whilst every care has been taken to ensure their accuracy, they should not be relied upon and potential buyers are advised to recheck the measurements.